



Software GSVmulti

User-guide

Updated:	13.02.2024
Version	kb-gsvmulti-v1.4-en
Editor	
Changes	Changelog Page 6



Table of contents

Description.....	3
License.....	3
System requirements.....	3
Hardware requirements.....	3
Screen.....	3
Driver.....	3
Installation.....	4
Uninstall.....	4
Installation.....	4
Commissioning.....	4
Installation of USB drivers.....	4
Getting started.....	4
Add Channel.....	4
Scaling.....	5
Recording of measurements.....	5
More functions.....	6
Notes.....	6
Changelog.....	6

Description

The software GSVmulti is used for the

- Configuration of measuring amplifiers,
- recording of measurement data,
- for playback and export of recorded data,
- the read-out dataloggers GSV-2MSD-DI and GSV 6BT.

The software GSVmulti contains modules for

- the stress analysis with strain gages
- the use of multiple axes and multi-component sensors (force torque sensors)
- the long-term data acquisition (data decimation at run time)

License

The software GSVmulti is free and unlimited for use and redistribution for commercial and non-commercial purposes.

Some functions, such as "MathScript" and integration of a GPS mouse require the purchase of a "Professional License".

System requirements

- Windows Server 2003 and following
- Windows 7
- Windows Vista
- Windows 10
- Windows 11

A version without DAQmx is available for Windows XP and for older hardware without SSE2.

Hardware requirements

Processor with SSE2 extension ("all devices of the last 5 years" with one of the above Windows operating systems, even Netbooks, notebooks, Tablet PCs,...)

Screen

Resolution at least 800 x 600

Driver

A "FTDI VCP" driver is required for the GSV 2TSD DI GSV 3USB, GSV-4USB. From Windows 7, this driver is usually the standard driver.

<http://www.ftdichip.com/Drivers/VCP.htm>

The same driver is required for the equipment GSV-2MSD-DI and GSV-8:

<https://www.me-systeme.de/setup/driver/usb/gsv-8/setup-gsv8driver.zip> (for units with german speaking operating system), or

<https://www.me-systeme.de/setup/driver/usb/gsv-8/setupBX8driver.exe> (for devices with languages other than german)

The first connection of the GSV measuring amplifier with USB port must wait until all device



drivers are installed and until the message appears: the device can be used now. Typically, you will see also the name of interface, E.g. "com32", which allows the communication with the measuring amplifier.

Installation

Uninstall

Please note:

If you uninstall components of the national instruments, other programs that use these components may also be uninstalled or not operable anymore.

Example: You have installed e.g. LabVIEW NiDaqMX version 12 and you would like to keep this, because other programs need it, then please skip over the uninstall and install a version of GSVmulti without NiDaqMX.

Installation

Please unzip the zip-file to any directory and run the setup.exe.

<https://www.me-systeme.de/en/software/gsvmulti>

Commissioning

Installation of USB drivers

Amplifiers GSV-8 and GSV-2MSD-DI with USB interface may require the installation of USB driver of ME measuring systems. For more information and download of the driver please visit here:

<https://www.me-systeme.de/en/software/driver/gsv-8-usb-driver>

(the driver for GSV-8 and GSV-2MSD-DI are the same)

For the other devices of the GSV-2, GSV-3 and GSV-4 series, it may be necessary to install of a USB driver from FTDI:

<https://www.me-systeme.de/en/software/driver/ftdi-usb-driver>

Getting started

Add Channel

Add the desired measuring amplifier and the desired number of channels with "Add Channel". Thereby use preferably the default settings for bitrate. Multiple devices with USB or RS232 or CANbus can also be added. The synchronization is done via software or external accessories, such as synchronization cable.

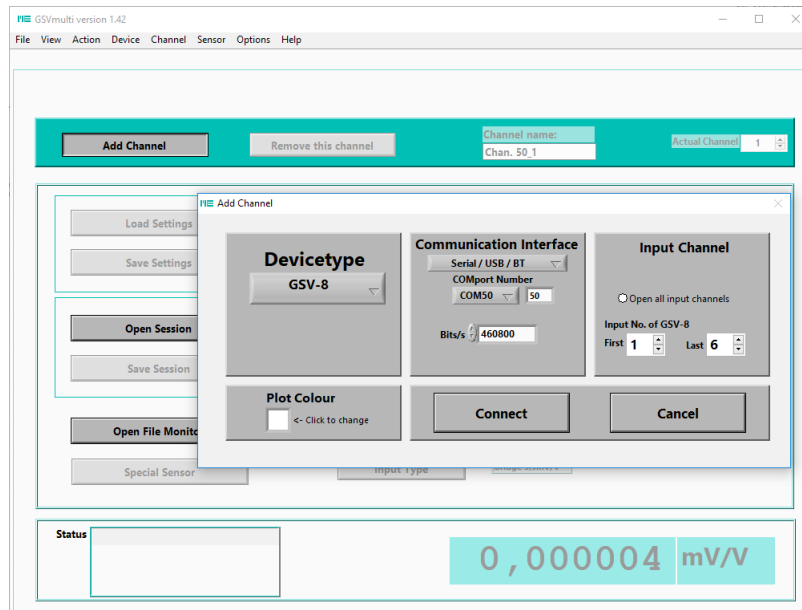


Figure 1: Opening of devices

Scaling

The button "Scaling" proceeds to the dialog for setting the scaling factors.

The scaling factors of multicomponent sensors (K6D, F6D, K3R) are set via the dialog "special sensor".

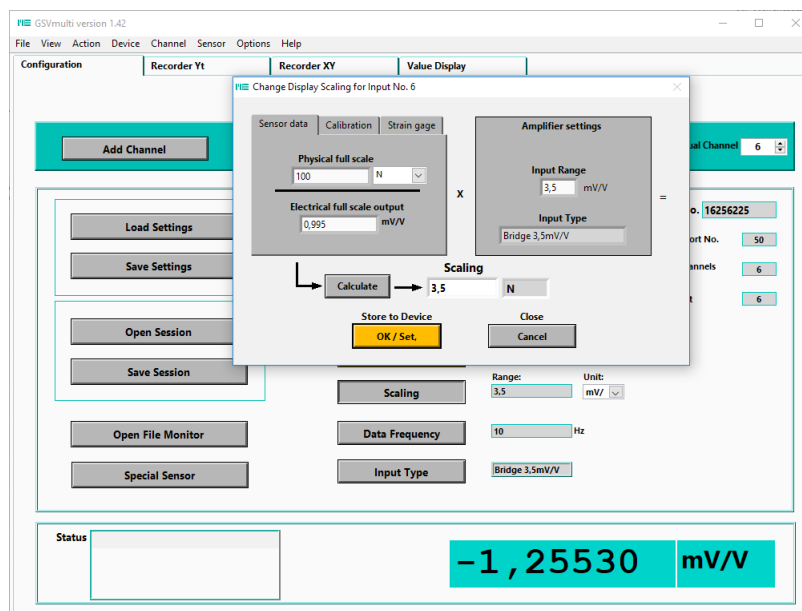


Figure 2: Setting the display



Recording of measurements

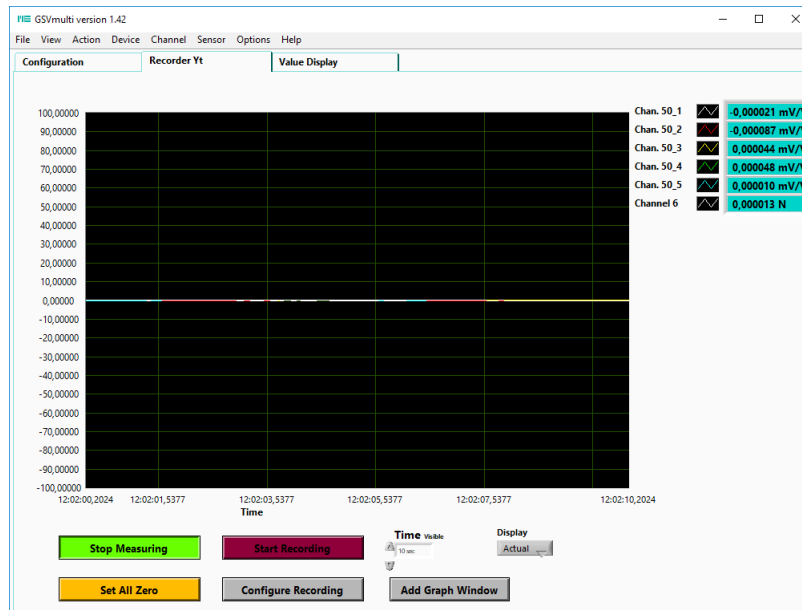


Figure 3: Recording of measurements

More functions

An overview of other functions is on the website:

<https://www.me-systeme.de/en/software/gsvmulti>

Notes

Notes on the USB interface you will find here:

<https://www.me-systeme.de/en/support/faq/2300-schnittstelle>

Changelog

Version	Datum	Änderungen
ba-gsvmulti-v1.0.odt	31.12.18	first german version
ba-gsvmulti-v1.0-en.odt	14.01.19	First english version
ba-gsvmulti-v1.2-en.odt	01.06.21	Reference to "Professional License"
kb-gsvmulti-v1.3-en	28.12.23	Formatting
kb-gsvmulti-v1.4-en	13.02.2024	Reference to Windows 11

Subject to change without notice.
Made in Germany

Copyright © 2024
ME-Meßsysteme GmbH
Printed in Germany